

CONSTRUCTION ZONE



→ A group from WAHA ready to tour the mock-up of an inpatient room.

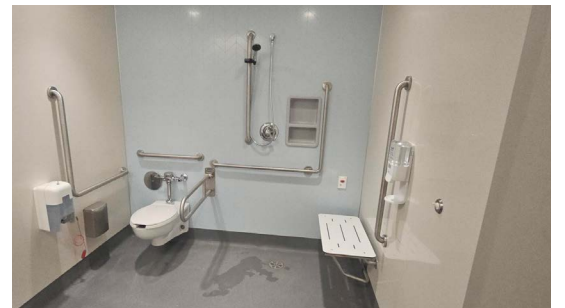
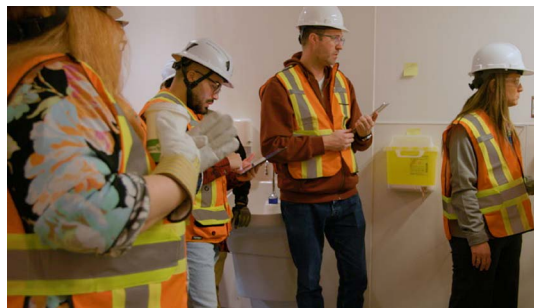
Full-scale mock-ups are a standard and important practice in hospital design and construction, giving users the opportunity to walk through spaces and experience how they will function in real life.

It was our pleasure to welcome a team from WAHA to take part in this hands-on review.

They shared important ideas that help improve design and functionality. Even seemingly small things, like where a soap dispenser is placed, can change how a nurse looks after a patient.

Receiving this kind of input now helps the design team make better choices as they finalize the design before construction begins.

We've shared a few photos to give you a sneak peek of the space to come.



“

Feedback allows us to refine our design so that it is better for the care team and more comfortable for patients and families.

It's been special to be involved with this Project from the beginning and see how the design has evolved. I'm looking forward to construction and to opening.”

Brandon Lawrence,
Senior Design Manager at Pomerleau

Thank you to our construction team and trade partners for preparing this space for review.

At times, the space felt so real it was easy to imagine it ready to welcome patients for care!

SPOTLIGHT ON CONSTRUCTION

MECHANICAL & ELECTRICAL (M&E) SYSTEMS

Bringing a Building to Life

When we think about constructing a hospital, we often picture the walls, floors and roof, but what really brings the building to life are the mechanical and electrical systems.

In a hospital, mechanical systems help keep patients and staff comfortable and safe by moving clean air, providing heat, and delivering water for hygiene and care.

Electrical systems power everything, from life saving equipment and lights to fire alarms and security systems.

Building these systems takes skilled tradespeople. Mechanical workers install pipes, ductwork, plumbing, medical gas systems and sprinklers. Electrical teams install wiring, panels, alarms and the systems that support patient care.



→ Electrical racks like this will power the hospital.

Sheet metal trades help build and install systems made from metal sheets, like ventilation and ductwork.

This Project is bringing new opportunities for skilled trades from the region. Through apprenticeships, people can build a meaningful career, contributing to a hospital that will serve the community for generations.



At its centre, mechanical and electrical work is more than systems. It's about people.

It's about creating safe, comfortable spaces where care can happen and the real heroes – the doctors and nurses – can look after people in need.



Andy Van Veen,
Senior M&E Operations Lead, Pomerleau

Reach out to learn more about apprenticeship and journey person opportunities in M&E trades on the Project or drop by one of our events in community.



PLUMBING AND SHEET METAL APPRENTICES

We're getting ready for summer construction and will be looking for plumbing and sheet metal apprentices to join us. If this is something you're interested in, we would love to hear from you! Let's Connect!

Reach out to Renee.Sauer: waha.information@pomerleau.ca



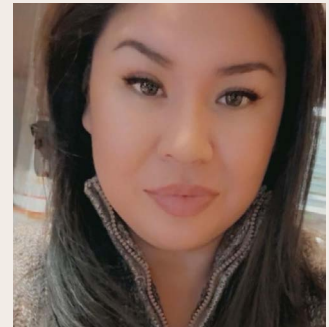
Since 2014, Jill of All Trades has been opening possibilities for young women in grades 9-12, offering hands-on activities that highlight many of the opportunities in the skilled trades.

Our Engagement Team was happy to take part in a conference at Northern College in Timmins on May 14.

Katrina Rickard shared her journey as a heavy equipment operator in a northern mine and spoke about apprenticeship opportunities connected to the WAHA Redevelopment Project.

Reach out to Katrina to learn more about pathways through the Redevelopment Project: waha.information@pomerleau.ca

Katrina's message to young women from Moosonee, Moose Factory and surrounding communities was clear:



“ The skilled trades offer a fulfilling, high-paying career path for young women. It can be hard to know where to start.

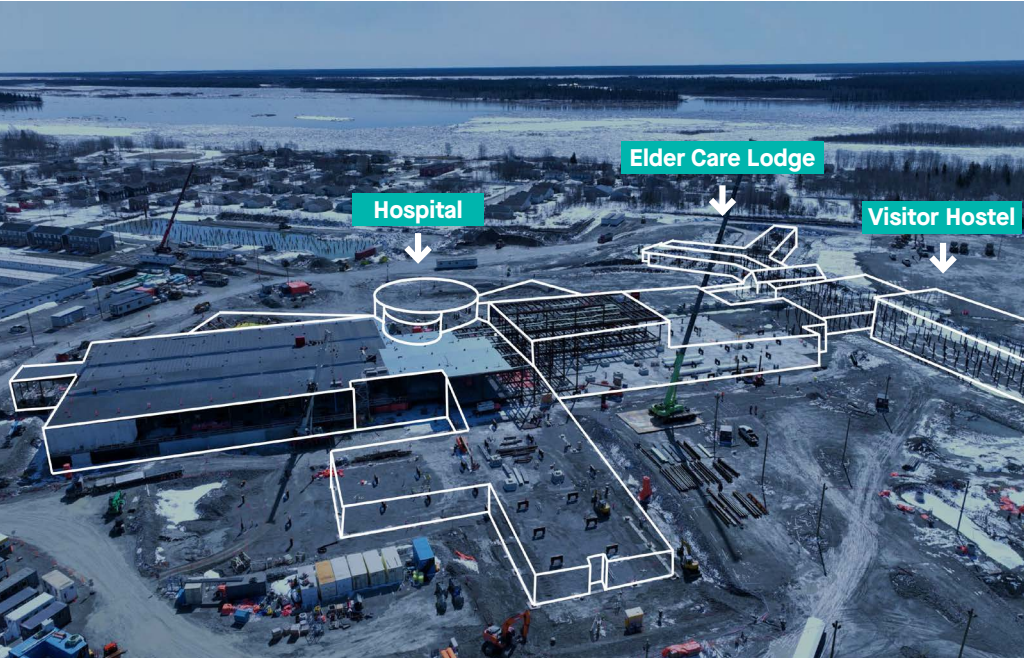
But we are here to help. ”

Katrina Rickard,
Project Administrative Assistant



SPRING CONSTRUCTION UPDATE

Here's What's Happening on Site This Month:



→ Layering the design over today's construction shows how the healthcare campus is taking shape.

- Construction continues to move forward across the healthcare campus, and it's exciting to see progress happening in every area.
- Crews are hard at work installing underground services that will support the entire site.
- At the hospital, the steel structure continues to rise and the first floor is starting to take shape as concrete is poured.
- Roofing has begun and teams are also busy installing some electrical and mechanical systems.
- Work is also underway at the Visitor Hostel and Elder Care Lodge where the foundations are being completed.



It's exciting for all of us to see construction progressing, with the hospital and other buildings starting to take shape.

We are looking ahead to continued progress and the milestones on the Project over the next few months.

Thank you to the team from WAHA who shared their feedback on the mock-ups.

Your input continues to guide the Project in meaningful ways. ”

Francois Beaudoin,
Vice-President, Construction, Pomerleau

TENDER OPPORTUNITIES

CLOSING JUNE 5 → Car lifts for vehicle maintenance garage

CLOSING JUNE 5 → Fluid applied flooring and high-performance coating for the hospital building

Upcoming Opportunities for Moose Factory Island:
Tree clearing, Earthworks, Site Fencing

UPCOMING ENGAGEMENTS

JUNE 2 → Community Presentation on the new Ambulatory Care Centre to Moose Cree First Nation members.
TO BE RESCHEDULED

And of course, our Engagement Team looks forward to joining you at the gatherings this summer!

CONNECT WITH US!

For questions about the Project and for business opportunities and community involvement

@ waha.information@pomerleau.ca

f facebook.com/WAHA.Redevlopment.Project

POMERLEAU

WAHA Redevelopment Project at a Glance



Project Overview

Based in northern Ontario, the WAHA Redevelopment Project is a transformative initiative to strengthen healthcare services for communities along Ontario's James Bay and Hudson Bay coasts.

New Acute Care Regional Hospital in Moosonee, along with an Elder Care Lodge, visitor hostel, and staff accommodations

New Ambulatory Care Centre in Moose Factory

Once complete, these modern facilities will support WAHA in delivering exceptional healthcare that reflects and honours the communities we serve.

Key Features

State-of-the-art hospital and care facilities

Spaces that respect and reflect Cree culture and traditions

Improved access to acute, ambulatory, and Elder care services

Modern infrastructure to support advanced medical technology and staff housing

Project Timeline

Groundbreaking **JANUARY 2023**

Steel Structure Underway **2025-2026**

Target Completion **2030**



[facebook.com/WAHA.Redevlopment.Project](https://www.facebook.com/WAHA.Redevlopment.Project)

<https://www.waha.ca/redevelopment-project/>

POMERLEAU